



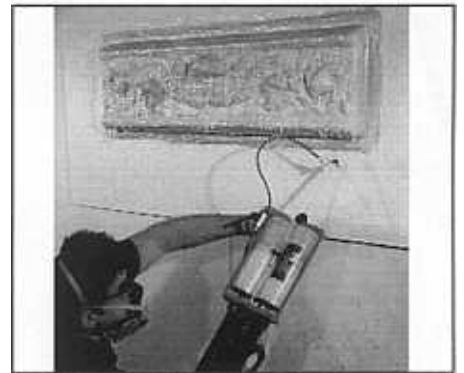
## Overview - What Is It & What Can You Do?

*EZ Spray Junior is a versatile, convenient and easy-to-use spray system for spraying the following EZ~Spray materials:*

- **EZ~Spray 45 Urethane Rubber** - For making sprayed rubber molds used to cast concrete, plaster, wax, etc. Surface preparation (applying sealing agent + release agent) required.
- **EZ~Spray Silicone Rubber** - For making fast sprayed rubber molds that have the best release properties for production casting of resins, plaster, etc. *Minimal surface preparation required.*
- **EZ~Spray Urethane Plastic** - For spraying over cured rubber molds to make fast support shells / mother molds. Plastic can also be sprayed into rubber molds to make fast, lightweight castings.
- **StyroCoat™ Styrofoam Coating** - Coat large areas of Styrofoam quickly with a plastic that is flame and impact resistant. Can then be sanded, primed and painted. Great for creating themed environments, theater and movie special effects.
- **EZ~Spray Rigid Foam** - Make lightweight, flame resistant castings, create special effects or use for lightweight reinforcement.



Spray urethane or silicone rubber for making molds of any original model.



Spray urethane plastic to make fast, strong mother molds or castings.



Spray urethane plastic to coat styrofoam for themeing & special effects.



Spray rigid foam that is flame rated for making fast lightweight castings (see foam rock above) or special effects.

## EZ~Spray Jr. vs. Original EZ~Spray Machine; What's The Difference?



Compared to Smooth-On's original Spray Machine, EZ~Spray Jr. is:

**Lower Cost (In The Short-Run)** - No "up front" expense to buy a spray machine (\$8,000).

**Convenient and easier to use** - If you have a compressor, you can spray rubber, plastic or foam.

**Time & Labor Savings** - No Cleaning & No Maintenance.